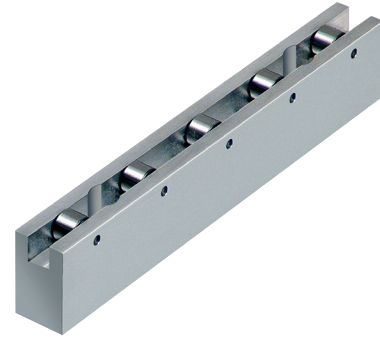
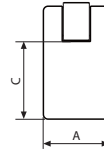
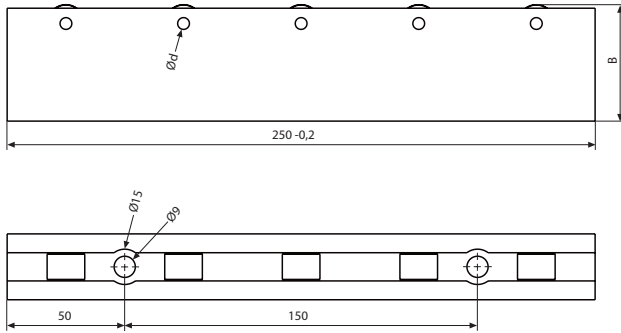




Roller conveyor without lifting universal use



Roller conveyor, segment 250 mm

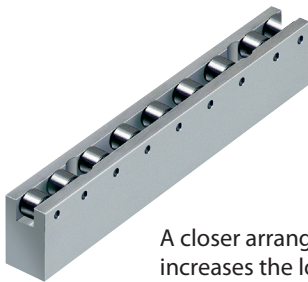
Roller bar width A (mm)	22	28	36
Max. load (kN)	32	32	39
Segment length (mm)	250	250	250
Max. load/roller (kN)	6,4	6,4	8,0
Roller Ø (mm)	16 x 12	16 x 12	19 x 12
B (mm)	39,5	49,5	62,5
C (mm)	23	33	43
Ø d (mm)	5	5	6
Part no.	HCR- 8.1834.5000	HCR- 8.1834.6000	HCR- 8.1834.7000

These universal roller conveyors have been developed for easy and safe conveying of heavy dies.

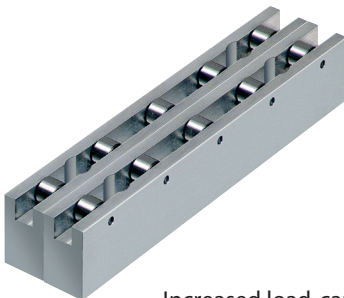
All roller conveyors are manufactured in segments of 250 mm to which further segments can be added until the desired length is obtained. The basic bodies of the roller conveyors are made of a high-strength and robust aluminium alloy. The roller bars are fastened through mounting holes provided in the segments.

HILMA/Carr Lane Roemheld also supplies longer single-piece roller conveyors.

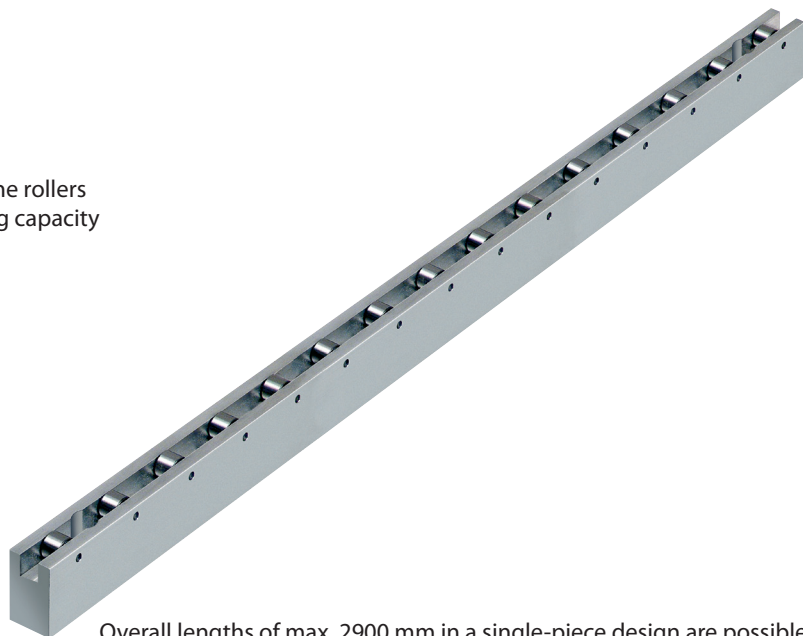
Other variations



A closer arrangement of the rollers increases the load-carrying capacity



Increased load-carrying capacity achieved by package design



Overall lengths of max. 2900 mm in a single-piece design are possible.