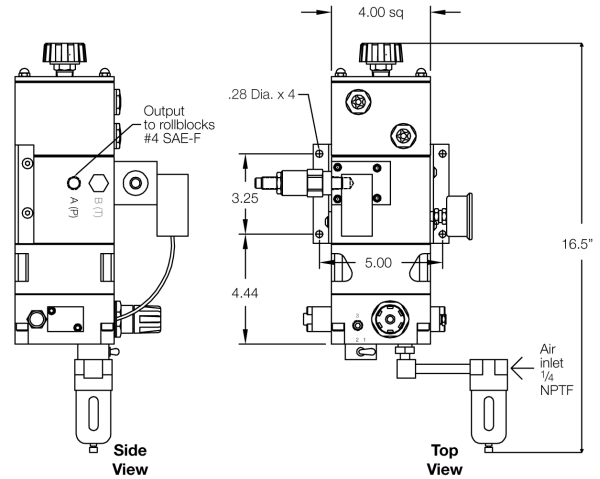
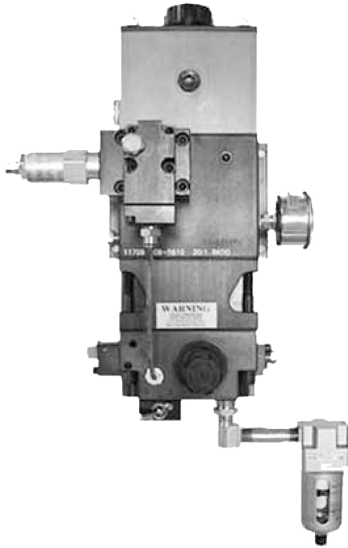


# Air/oil power unit for use with hydraulic rollblocks max. operating pressure 1,740 psi



**ROEMHELD**  
HILMA ■ STARK



## Applications:

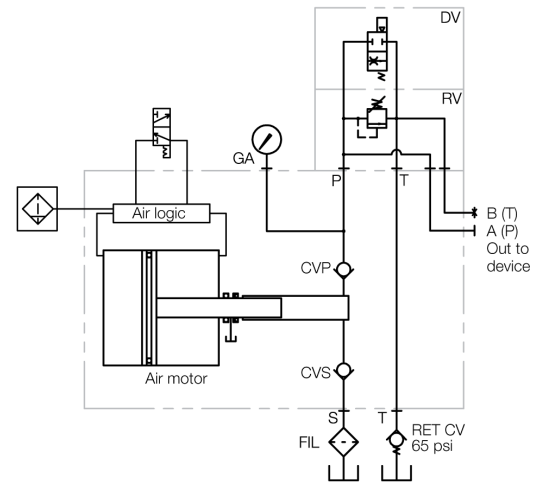
The HCR-PA-23X01 is an air-driven hydraulic pump package. It is designed for intermittent use and the actuation of die lifters with operating pressure of 550 to 1,740 psi (40 to 120 bar).

## Description:

The pump is actuated by the manual air toggle or solenoid operated valve located at the base of the pump. It has a 40 cu. inch reservoir, with 20 cu. inch usable capacity. The out-put pressure (20:1) is controlled by the adjustable air regulator. A safety circuit relief valve reduces possible pressure intensification caused by overloading the rollblocks. A return line check valve keeps balls or rollers that are not under the die up during stamping.

## Note:

Minimum inlet air pressure is 60 psi, and 95 psi is required to achieve 1740 psi hydraulic pressure. Air supplied to pump must be clean, dry and non-lubricated. Air filter is included.



| Part no.        | Valve         | Pressure switch |
|-----------------|---------------|-----------------|
| HCR-PA-23201    | manual toggle | no              |
| HCR-PA-23201-PS | manual toggle | yes             |
| HCR-PA-23501    | 110 VAC       | no              |
| HCR-PA-23501-PS | 110 VAC       | yes             |
| HCR-PA-23601    | 24 VDC        | no              |
| HCR-PA-23601-PS | 24 VDC        | yes             |