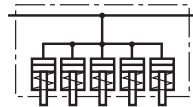


Clamping bar with press-in piston single-acting, with spring return



ROEMHELD
HILMA ■ STARK



Applications:

- stationary installed on press beds and rams
- on machines and equipment for clamping and locking
- clamping force up to 35 kN, piston stroke 6 mm

Function:

The clamping bar is mounted on the press bed or ram using a spacer ledge. Clamping is carried out on the die clamping edge by applying hydraulic pressure to the 5 pistons which are arranged side by side with a pressure medium and mechanical unclamping by a spring return. Hydraulic oil is supplied through G $\frac{1}{4}$ ports provided on both sides. Flat design with die inlet chamfers. Clamping force up to 35 kN uniformly distributed over 5 pistons. When using several clamping bars in a row, the elements are interconnected by means of hoses or pipes.

Special features:

- ◇ piston stroke 6 mm
- ◇ very flat and compact design
- ◇ the full length of the stroke may be used
- ◇ easy fastening
- ◇ rapid and easy retrofit

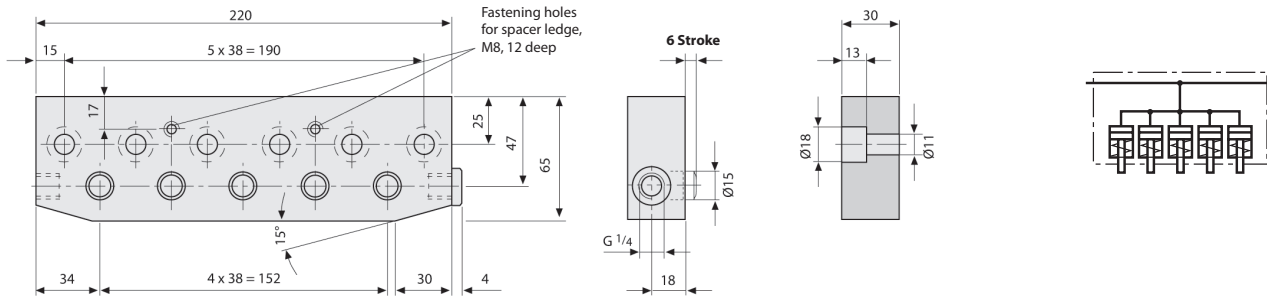


Clamping bars installed in press bed and ram.
Easy loading of dies using die change consoles and lateral guide rollers.



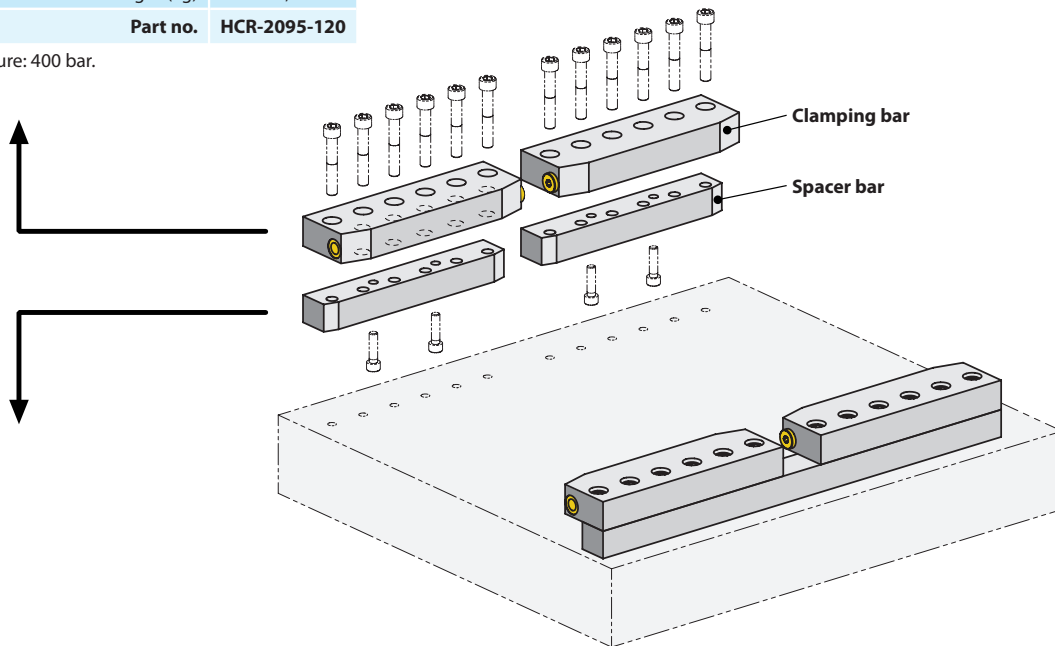
Clamping bar with press-in piston single-acting with spring return

Clamping bar



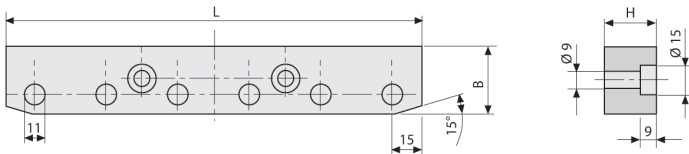
Clamping force at 400 bar (kN)	35,0
100 bar (kN)	8,7
Stroke (mm)	6,0
Oil consumption (cm ³)	5,3
Number of pistons	5,0
Piston Ø (mm)	15,0
Weight (kg)	3,2
Part no.	HCR-2095-120

max. operating pressure: 400 bar.



Spacer bar

for obtaining the required clamping edge height



Length L (mm)	220
Width B (mm)	35
Height H (inch)	X.XXX
for clamping edge (mm)	H-.118±.06
Part no.	HCR-HM-2095-5-XXXX

Other clamping edge heights H are available on request.